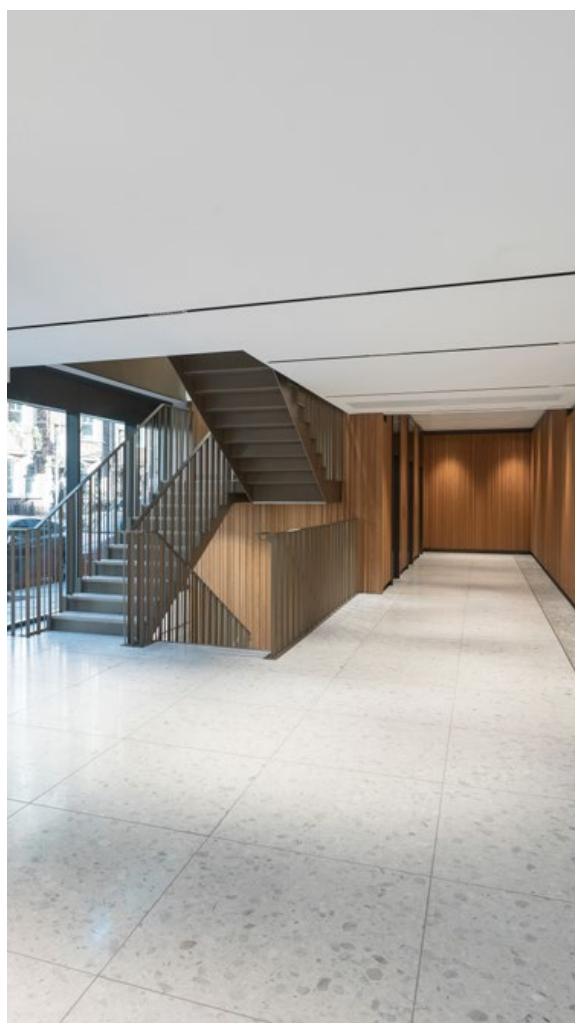


n e s i t e

# TERRAZZO

AGGLOMERATED STONES COLLECTION



[NESITE.COM](https://www.nesite.com)

# ABOUT TERRAZZO FINISHING

TERRAZZO covering is a contemporary interpretation of the timeless look of stone, available in different color nuances and particle sizes.

The surface is made from agglomerated marble of various sizes, textures and colours, skilfully mixed with high quality resins, certified and tested for indoor use. The result is a versatile, technically advanced finish of high mechanical and physical performance.

In the Nesite factory, the covering is coupled to the panel core, rectified in line, edged and bevelled, in order to obtain a product which respects the modularity of the raised floor and allow an easy handling, thanks to the protection edge in ABS.

Ideal in business centers and prestigious spaces with medium traffic.

# TERRAZZO

## SPECIFICATION

### SHEET

<b>Description</b>	Tiles in agglomerated marble made of 92-96% selected marble chips mixed with polyester resin.
<b>Color</b>	Aggregates such as glass, mirror and mother of pearl can be added to the marble matrix. The shade is achieved by adding colored pigments with excellent stability to light. The material can be affected by acids and is quite soft, as all calcareous products.
<b>Finish</b>	polished, honed, brushed or unpolished
<b>Size</b>	600 x 600 mm
<b>Thickness</b>	12 mm
<b>Standard</b>	Standard EN 14617 "Agglomerated stone: Test methods" Standard EN 15285:2008 "Agglomerated stone: Modular tiles for flooring and stairs (internal and external)" Standard EN 15286:2013 "Agglomerated stone: Slabs and tiles for wall finishes (internal and external)"
<b>Certification</b>	Due to the raw materials used and to the vibro-compression process, the material has achieved the "Greenguard Certification" (certificate n° 29305-410) and "Greenguard Gold Certification" (certificate n° 29305-420) issued by Greenguard Environment Institute. This means that the material can safely be used indoors, as its VOC emissions are well below the strict standard required by "Greenguard Gold Certification".



CHARACTERISTICS	STANDARD	VALUE	NOTES
Length and width	EN 14617-16	± 0,5 mm	Refers to tiles
Thickness	EN 14617-16	± 0,7 mm	Refers to tiles
Straightness of sides	EN 14617-16	± 0,3 mm	Refers to tiles
Rectangularity	EN 14617-16	± 0,9 mm	Refers to tiles
Center curvature	EN 14617-16	± 0,2% refers to length	Refers to tiles
Edge curvature	EN 14617-16	± 0,2% refers to length	Refers to tiles
Warping	EN 14617-16	± 0,2% refers to length	Refers to tiles
Apparent density	EN 14617-1	2450 - 2650 Kg/m <sup>3</sup>	-
Water absorption	EN 14617-1	≤ 1,00%	-
Flexural strength	EN 14617-2	10 - 35 MPa	-
Abrasion resistance	EN 14617-4	33 - 44 mm	-
Frost resistance	EN 14617-5	KMf25 0,4 - 1,2	-
Thermal shock resistance	EN 14617-6	$\Delta m\% \leq 0,15\%$ $\Delta R\% \leq 60\%$	Test temperature: 70°C
Impact resistance	EN 14617-9	1,0 - 2,0 J 1,5 - 3,5 J	For thickness 12 mm
Chemical resistance	EN 14617-10	C1	For thickness 20 mm
Linear thermal expansion coefficient	EN 14617-11	12 - 26 x 10 <sup>-6</sup> °C <sup>-1</sup>	
Dimensional stability	EN 14617-12	Class A (<0,3 mm)	Class B (0,3 – 0.6 mm) for Verde Liguria and Rosso Levanto
Electrical resistivity	EN 14617-13	$R_s \geq 1010 \Omega$ $R_v \geq 108 \Omega \text{ m}$	Refers to surface Refers to volume
Compression resistance	EN 14617-15	90 - 150 MPa	
Mohs hardness	EN 101	up to 3 Mohs	
Thermal conductivity	EN 12524	1,3 W/(m K)	From tabulated values
Reaction to fire	EN 13501-1	A2fl-s1	
Slip resistance	EN 14231	≥ 35 (Dry) ≥ 3 (Wet)	
Slip resistance	DIN 51130	R9	For honed H9

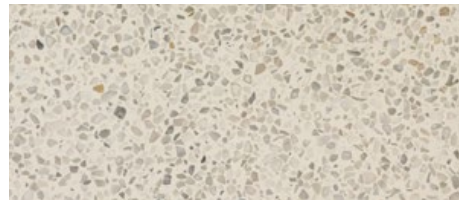


# COLLECTION

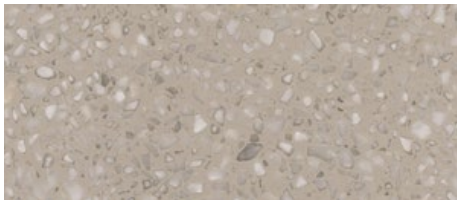
## 900



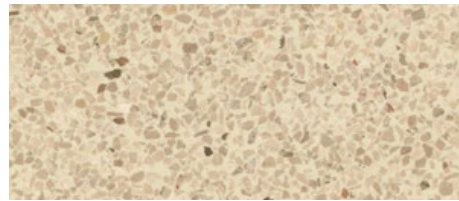
NEW YORK \_\_\_ G10



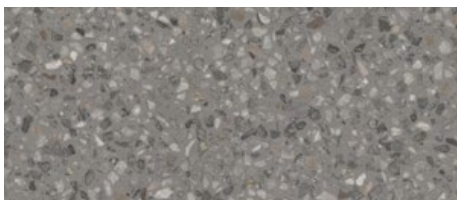
BERLIN \_\_\_ G14



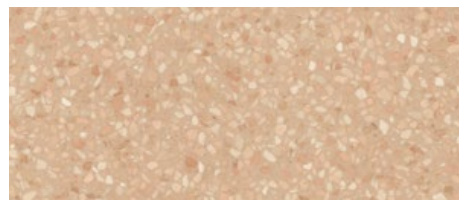
CAMDEN \_\_\_ M 2H6



PARIS \_\_\_ G15



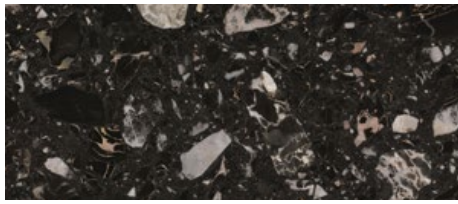
MILANO \_\_\_ G18



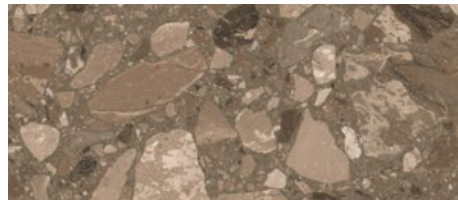
BRERA \_\_\_ G25

# COLLECTION

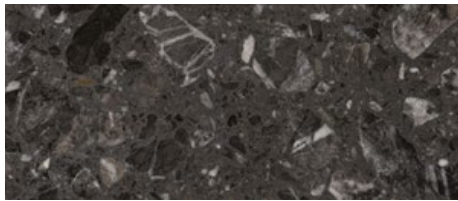
## BRECCIATI



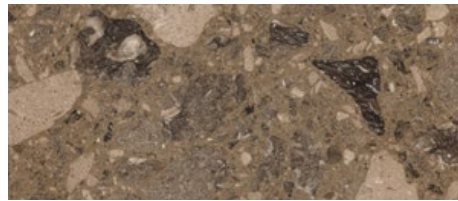
NERO PORTODORO \_\_\_\_ D110



BLACK ROYAL \_\_\_\_ D150



GRIGIO CARNICO \_\_\_\_ C107



RASOTICA \_\_\_\_ D123



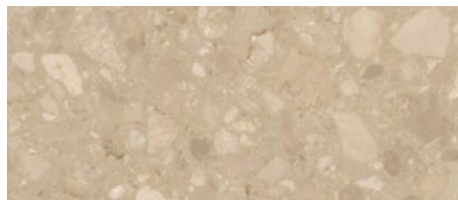
FIOR DI PESCO \_\_\_\_ D125



BRECCIA AURORA \_\_\_\_ A101



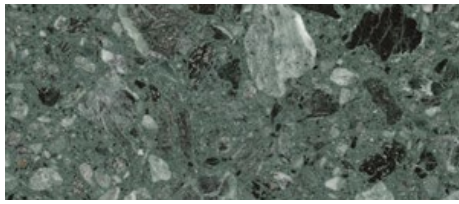
ARABESCATO BIANCO \_\_\_\_ B106



BOTTICINO \_\_\_\_ A103

# COLLECTION

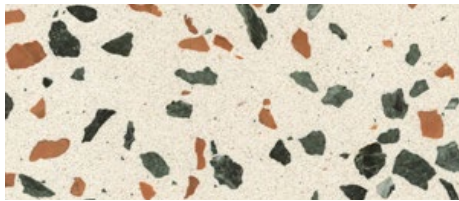
## BRECCIATI



VERDE ALPI \_\_\_\_ C113



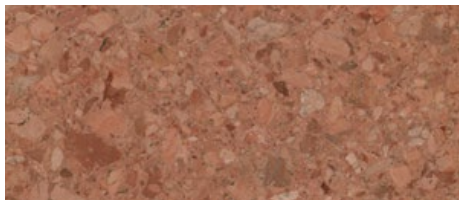
PERLATO ROYAL \_\_\_\_ B108



VENDOME \_\_\_\_ MD 2H5



ROSA PERLINO \_\_\_\_ C126



ROSSO VERONA \_\_\_\_ C128



ROSA DEL GARDA \_\_\_\_ A127

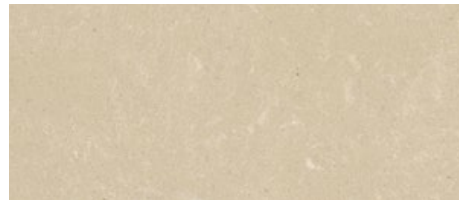


# COLLECTION

## VENATI



MIMOSA \_\_\_\_ MC2D9



TIBET \_\_\_\_ M2G9



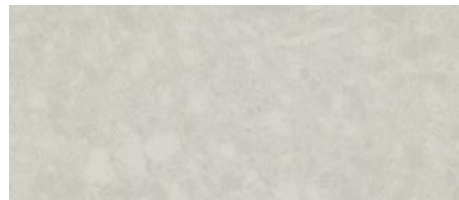
COTONE \_\_\_\_ MB2G3



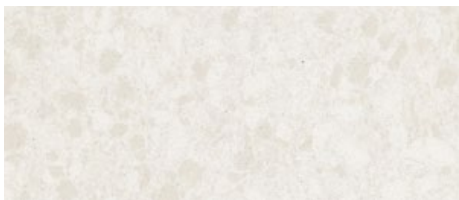
LOTUS \_\_\_\_ MA2G7



MAGNOLIA \_\_\_\_ MC2E0



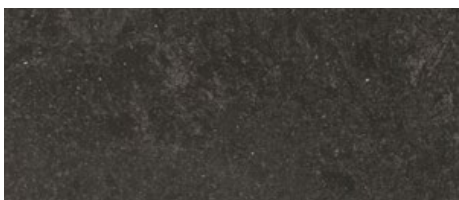
DHALIA \_\_\_\_ MC2D4



PEONIA \_\_\_\_ MC2D3



LINO \_\_\_\_ MB2G4



LAPIS \_\_\_\_ MC2H2



GRIGIO PERLA \_\_\_\_ MC2H4

# COLLECTION

## MARGHESTONE



BIANCO GHIACCIO \_\_\_\_ MA260



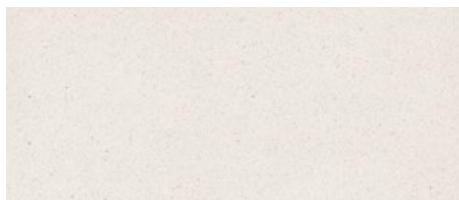
MAREMMA \_\_\_\_ MB244



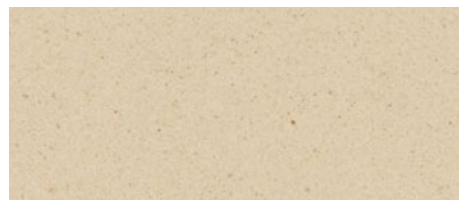
BIANCO AVORIO \_\_\_\_ MA267



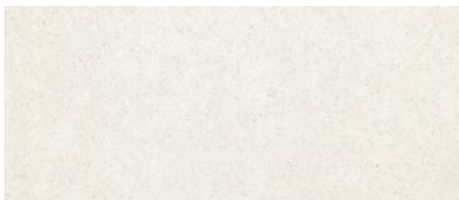
NINFEA \_\_\_\_ MA2B9



BIANCO NEVE \_\_\_\_ MC256



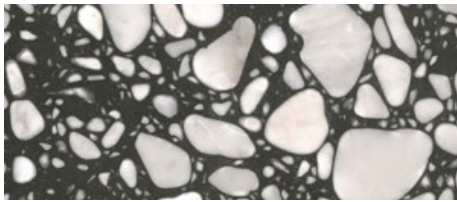
DALMATA BEIGE \_\_\_\_ MA2H1



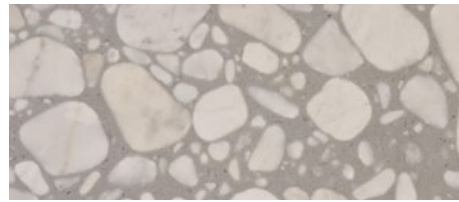
ALTHEA \_\_\_\_ MD2F8

# COLLECTION

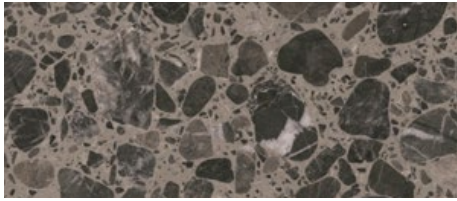
# PALLADIO



PALLADIO MORO \_\_\_\_ D151



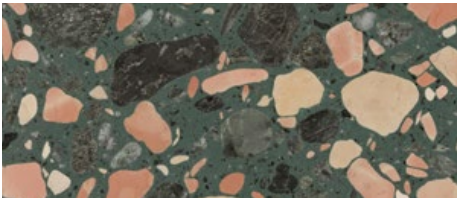
PALLADIO GRISO \_\_\_\_ D152



PALLADIO LAGUNA \_\_\_\_ D154



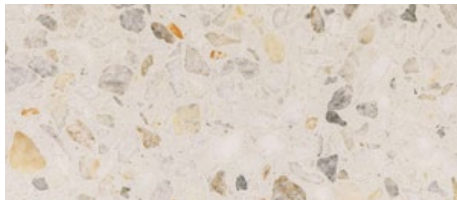
PALLADIO DOGE \_\_\_\_ D153



PALLADIO FENICE \_\_\_\_ D155

# COLLECTION

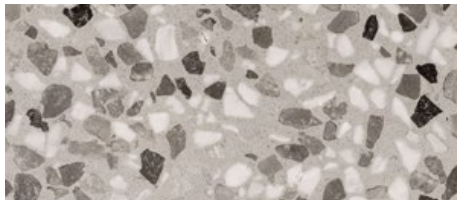
## PALAZZO



PALAZZO MAFFEI \_\_\_\_ G32



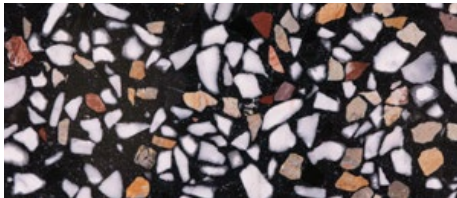
PALAZZO REALE \_\_\_\_ G28



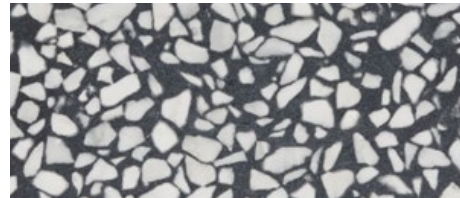
PALAZZO FARNESE \_\_\_\_ G31



PALAZZO DUCALE \_\_\_\_ G27



PALAZZO PISANI \_\_\_\_ G26



PALAZZO DIAMANTI \_\_\_\_ G33



PALAZZO FOSCARI \_\_\_\_ G30



PALAZZO MAZZANTI \_\_\_\_ G29

**n e s i t e**

**Transpack Group Service SpA**

**Sede legale**

via S. Marco 11  
35129 Padova (PD)  
+39 049 8072536

**Produzione**

via dell'Industria 19  
35028 Piove di Sacco (PD)  
+39 049 8072536

**Showroom Milano**

viale T. A. Edison 50  
20099 S.S. Giovanni (MI)  
+39 02 83595156

**NESITE.COM**